



**INSIDE  
THIS ISSUE:**

**Officer /  
Committee  
List** 2

**Events  
Calendar** 3

**President's  
Message** 4

**Meeting Info** 5  
**(Mar 8, 2012  
DEADLINE)**

**Continuing  
Education** 6

**ASHRAE  
Webcast** 8

**ASHRAE  
Learning  
Institute** 9

**Student Zone** 10

**YEA** 12

**Valentine** 13

**Dance**

**THANK YOU**

**Golf Picnic** 14

**Job Postings** 16

**Meeting  
Minutes** 17

**New Members** 19

**PAOE Points** 19

**Society News** 20

**Government** 22

VOLUME 7, ISSUE 7

MARCH 1, 2012

## **Dedicated Outdoor Air Systems- A Path to Balancing Energy and IEQ**

**April 19, 2012**

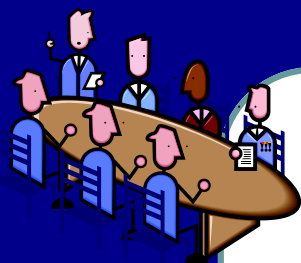
**1 p.m. – 4 p.m. EDT**



**Online Registration begins March 19, 2012**

**[http://www.ashrae.org/membership--  
conferences/webcasts](http://www.ashrae.org/membership--conferences/webcasts)**

*Refer to page 8 for more details*



## Chapter Officers

### President

Jeffrey Ellis  
585-232-3440  
ellis@airsystemsbalancing.com

### President Elect

Michelle Sommerman  
585-232-5135  
msommerman@bergmannpc.com

### Vice President/Tech

Robert Wind  
585-341-3172  
rwind@ibceng.com

### Secretary

Edward J. Burns  
(585) 872-6681  
ejb@mechtechhvac.com

### Treasurer

Christina Walter  
585-486-2148  
cmwalter@trane.com

## Committee Chairs

### CTTC/Programs

Michelle Sommerman 585-232-5135  
msommerman@bergmannpc.com

### CTTC/TEGA

Jeff Davis 585-381-3360(136)  
jdavis@turnerengineering.com

### CTTC/ Refrigeration

Michael Nohle 585-545-5522  
mikenohle@aol.com

### Historian

Lee Loomis 585-738-3079  
leeloom@aol.com

### Membership

Bill Clark 585-507-1961  
wjclark@dayasi.com

### YEA

Chris Lukasiewicz  
585-381-3360 (135)  
clukasiewicz@turnerengineering.com

## Board of Governors

William Murray (3rd Year)  
585-641-7121  
bmurray@ec4b.com

Tim Duprey (3rd Year)  
585-924-9360  
tduprey@pascobas.com

Eric C. Smith (2nd year)  
585-381-3360  
esmith@turnerengineering.com

Jeff Close (2nd year)  
585-289-6816  
Jeff.close@pres-services.com

William J. Clark (1st Year)  
585-507-1961  
wjclark@dayasi.com

Jaimee Reynolds (1st year)  
585-325-6004  
jreynolds@pathfinder-ea.com

Beth Smith (1st year)  
585-272-0110  
bsmith@vpsupply.com

### Student Activities

Al Rodgers 585-325-6004  
arodgers@pathfinder-ea.com

### Newsletter Editor

Jaimee Reynolds 585-325-6004  
jreynolds@pathfinder-ea.com

### Attendance & Reception

Timothy Duprey 585-924-9360  
tduprey@pascobas.com

### Building Simulation User's Group (BSUG)

Bill Bishop 585-325-6004  
wbishop@pathfinder-ea.com

### Webmaster

Kevin Wind 585-263-1280  
kwind@rochester.rr.com

### Research Promotion

Jeff Close 585-289-6816  
Jeff.close@pres-services.com

Beth Smith 585-272-0110(3010)  
bsmith@vpsupply.com

## ASHRAE 2011-2012 Meeting Schedule

Date	Event	pdh / Theme	Location	Schedule
09/12/11	Annual ASHRAE Clambake James Bittker, NYSERDA New Construction Program	Membership Promotion	Burgundy Basin	5:00 PM
10/10/11	Dick Sherren Rooftop Wind Restraints	( 1 ) pdh available	Mario's	12:00 PM
11/14/11	Stanley Mumma, DL Region III Chilled Surfaces and DOAS	( 1 ) pdh available	Mario's	12:00 PM
12/12/11	BIM - Joint ASPE Meeting John Jansen, Imaginit Technologies	Research Recognition (1) pdh available	Mario's	12:00 PM
01/09/12	Tribute to Lynn Bellenger Enid Cardinal, Director of Sustainability at RIT Topic, TBD Bill Bishop - 5 min on BSUG	Awards Student Night	RIT	Dinner (Time, TBD)
02/10/12	Annual ASHRAE Valentines Dinner Dance	---	Inn on Broadway	7:00 PM
02/13/12	Steve Beck ASHRAE IAQ Guide, current work on Building Performance Metric	Membership Promotion  ( ) pdh available	Mario's	12:00 PM
03/12/12	Drury Crawley, DL Region III AEDG's to Net-Zero Buildings and Future Trends in Simulation	Research Promotion ( 1 ) pdh available <i>pending</i>	Mario's	12:00 PM
04/09/12	Refrigeration Tour Wegmans Market St - TBD	Student Night ( 1 ) pdh available <i>pending</i>	TBD	TBD
05/15/12	Annual ASHRAE Golf Outing and Picnic	---	Ravenwood Golf Club	9:30 AM Golf 4:30 - 8:00 Picnic

### Mission Statement

ASHRAE will advance the arts and sciences of heating, ventilation, air conditioning, refrigeration and related human factors to serve the evolving needs of the public and ASHRAE members.



Shaping Tomorrow's  
Built Environment Today

### Vision Statement

- will be the global leader in the arts and sciences of heating, ventilation, air conditioning and refrigeration.
- will be the foremost, authoritative, timely and responsive source of technical and educational information, standards and guidelines.
- will be the primary provider of opportunity for professional growth, recognizing and adapting to changing demographics, and embracing diversity.



**Jeff Ellis, 2011-2012 President**

I would like to thank Steve Beck, Chief Sustainability Officer and Director of Science and Technology at LeChase Construction Services, LLC for his presentation in January. It is always good to catch up with Steve and hear about some of the work he is doing both with ASHRAE and with LeChase.

Our March speaker will be Drury Crawley, an ASHRAE Distinguished Lecturer from Region III. His topic will be "AEDG's to Net-Zero Buildings and Future trends in Simulation." We are hoping to have (1) pdh available for this presentation.

Many thanks go out to Jody and Matt McGarry (and the entire crew at ABR Wholesalers) for hosting another successful Valentine's Dinner at the Inn on Broadway. This evening has always been a highlight of our calendar year. Thanks Jody!

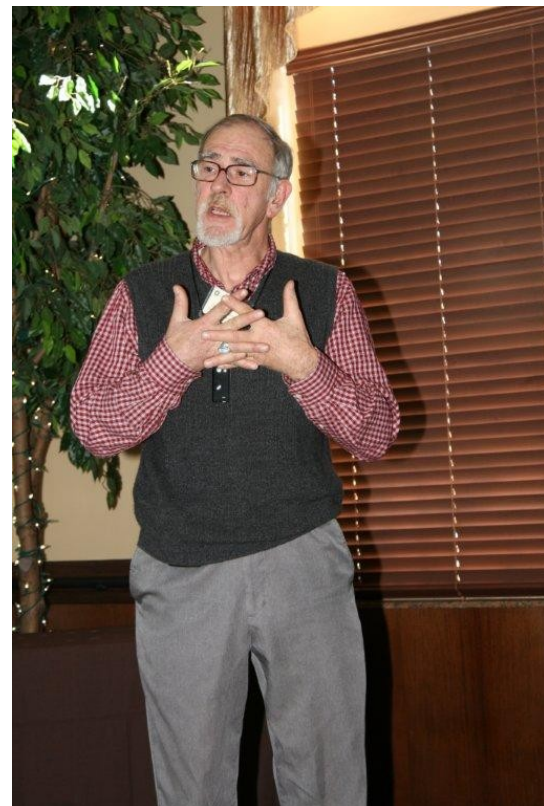
The Rochester Chapter sponsored (2) RIT students to attend the ASHRAE Winter Meeting in Chicago in January. It was a great opportunity to showcase ASHRAE and its activities to prospective engineers who will soon be deciding whether they want to pursue HVAC or go another direction.

Please take time to explore the updated Rochester ASHRAE Chapter website at <http://rochester.ashraechapters.org/>

Thanks for the continued support of YOUR local chapter of ASHRAE.



**Student chapter member Peter Tarnawskij speaking about his experience at the Winter Conference in Chicago, IL. Peter and his classmate, Hendrik, were sponsored by the ASHRAE Rochester Chapter.**



**Steve Beck speaking about two new guidance documents from ASHRAE: Indoor Air Quality Guide, Best Practices for Design, Construction and Commissioning and Best Practices for Evaluating and Improving the Performance of Commercial Buildings (PMP)**



# Monthly Meeting

## **March ASHRAE Meeting – { 1 PDH pending }**

**Monday, March 12, 2012**

**Location:** Mario's Italian Steakhouse 2740 Monroe Ave, Rochester

**Time:** 12 PM with Buffet Lunch Served

**Cost:** \$25.00, PayPal On-Line *or* cash/check at door

**Speaker:** Drury Crawley, PhD, ASHRAE Distinguished Lecturer, Director, Building Performance Products Bentley Systems, Inc. Washinton, DC

### **AEDG's to Net-Zero Buildings and Future Trends in Simulation**

Our March presentation will provide an overview of the AEDG process as well as examples of packages and case studies from each guide. Examples of today's zero-energy buildings and a number of activities to aggressively move buildings to substantial energy savings over the next few years will be reviewed. Over the next ten years, changes in building technology—particularly wireless controls and solid-state lighting—will profoundly alter how our buildings are designed, built, and operated. This presentation will also provide an overview of trends and drivers affecting the building industry as well as the simulation tools of tomorrow.

Dr. Crawley leads the development of software for building performance and sustainability at Bentley Systems. Prior to joining Bentley Systems in 2010, he lead the U.S. Department of Energy's team working to achieve cost-effective net-zero energy commercial buildings by 2025 and was responsible for managing the DOE's building energy software tools development activities including EnergyPlus and the Open Studio plugin for Google SketchUp. With more than 30 years of experience in buildings energy efficiency, renewable energy, and sustainability, he has worked in government research and standards development organizations, as well as building software, design and consulting companies. A registered architect, he also has a PhD in Mechanical Engineering on the topic of building simulation as a policy tool from the University of Strathclyde in Glasgow, Scotland.

He is also active in AIA, IBPSA, USGBC (former member of the Research Committee and the Energy & Atmosphere TAG), and serves on the editorial boards of three international Journals. He has written more than 100 papers and articles and made more than 300 presentations on energy efficiency, sustainability, and renewable energy topics throughout the world.

Cash or check payment still accepted at the door with your reservation. Remember, as an option, we now have on-line payments available via PayPal.

<< ***Pay for Meeting Registration online via PayPal (no PayPal account required)*** >>

***Use the following link:*** <http://rochester.ashraechapters.org/meetings.html>

Please RSVP no later than noon Thursday March 8th to Tim Duprey

Phone: 585.924.9360 or Email: [tduprey@pascobas.com](mailto:tduprey@pascobas.com)

Respectfully,

*Tim, Attendance Chair*

### **Attention Members:**

Just a reminder that all members that reserve a spot for the monthly meeting will be responsible for that reserved space.

Members have until 12:00 pm the day of the RSVP deadline to cancel their meeting reservation.

Failure to comply with this rule will result in the attendee being responsible for the payment of that reservation.

ASHRAE Rochester Chapter Officers



**Target Audience:**

- Any Direct or Indirect AM who has not had the opportunity to attend GTP
  - Perhaps a local new hire - that can't commit to 6-months at GTP
  - Someone who was promoted from within
  - A new hire that came from outside our industry
- Any BAS AE, PM, PA, Application Specialist or Estimator who wants to broaden their base in the fundamentals

**Primary Benefit:** Students will enjoy learning as much practical knowledge as possible about Air Conditioning Fundamentals. Students won't waste a great deal of time in theory. The typical student can immediately apply what he/she learns upon returning to their office. Past attendees have boosted their overall confidence and found many ways to apply their recently acquired knowledge.

---

**2012 Course Offerings (Rochester, NY):** (these classes are 3-days; Tuesday - Thursday)

---

[ ] Feb 14-16 '**Airside Fundamentals-I**' (Load Design and Psychrometrics)

---

[ ] Mar 13-15 '**Airside Fundamentals-II**' (Duct Design, Fans & Fan Laws & Acoustics)

---

[ ] Apr 17-19 '**Refrigeration Fundamentals**' (Refrig Basics, Refrig Piping, Refrig & Our Environment)

---

[ ] May 15-17 '**Systems Fundamentals**' (HVAC Systems, Dehumidification, IceStorage-LowTempAir, Bldg Pressurization)

---

[ ] Jun 12-14 '**Energy Efficient Design Fundamentals**' (Chiller-Side, Air-Side, System Controls, Energy Recovery)

---

[ ] Aug 7-9 '**Product Fundamentals**' (AHU, WSHP, RTU, Chillers, Fan Coils, UV)

---

[ ] Sep 18 & Oct 2-30 '**Introduction to Air Conditioning Fundamentals**' (6-Tuesday evening series covering each of the above topics in a 3-hour 'big-picture overview')

---

*Note: For more information about each of these classes, log onto [BeckerLearning.com](http://BeckerLearning.com)*

**Registration Deadline:** Each course will be filled on a first-come-first-reserved basis.

**Payment Deadline:** Complete Payment must be received prior to the start of the class.

**Contact:** Joe Becker, Becker Learning / 5980 Sheppard Road / Dansville, NY 14437  
Phone: (585) 317-0000 Email: [Joe@BeckerLearning.com](mailto:Joe@BeckerLearning.com)

---

**More Details for 3-day courses:**

---

**Where:** We will hold the 3-day classes at a Homewood Suites Hotel in the greater Rochester area - exact location to be determined no later than 2-weeks prior to the start of class. You will be able to reserve a room for the Becker Learning rate of \$104/night if you tell them you are part of the Becker Learning group.

\* Class Registration: 10 or less, **Henrietta** - 2095 Hylan Drive, Rochester, NY 14623 - (585) 334-9150

---

\* Class Registration: >10, **Greece** - 400 Center Place Drive, Rochester, NY 14615 - (585) 865-8534

---

**Time:** We will start each morning at 8:00 AM and end by 5:00 PM (except Thursday when we end by 4:00 PM for travelers)

---

**Food:** Lunch, mid-morning and mid-afternoon snacks & drinks are provided.

---

**What is not included:** Transportation, other meals & lodging.

---

**Travel: Arrival:** Since the seminar starts at 8:00 a.m., plan to arrive the night before.

---

**Departure:** You can book flights out of Rochester International Airport as early as 5:15 p.m. on Thursday since both of our Hotel locations are less than 10-minutes from the airport.

---

**More Details for 6-night Fall Intro Series:**

---

**Where:** The specific Henrietta, NY location will be decided no later than 2-weeks before the class & attendees will be emailed the appropriate information with plenty of notice. The class will run from 5:00 - 8:00 pm. No meal is provided, so attendees should catch dinner before the class starts.

---

**Registration:** Please fill out this form for each person attending, and mail along with a **Check** or **Purchase Order** (made out to 'Becker Learning') to:

**Becker Learning / 5980 Sheppard Road / Dansville, NY 14437**

2012 Courses:             Airside-I             Airside-II             Refrigeration             Systems

(check all that apply)             Energy Eff. Design             Products             Fall 6-night Intro Series

Name: \_\_\_\_\_ Title: \_\_\_\_\_

Trane Sales Office: \_\_\_\_\_

Address: \_\_\_\_\_

Phone: (       )

Email: \_\_\_\_\_

Type	# of Courses	\$/course	Total Cost \$	Check # or PO #
3-day		\$1,100		
6-night		\$550		

*Authorizing Person*

Printed Name	Signature	Date

**\*\*\*If a PO is given, full payment must be received prior to the first day of class.**

**Cancellation Policy:**

- If someone cancels 60-days prior to the start of the class => no cancellation charge.
- If someone cancels 30-60 days prior to the start of class => 50% cancellation charge
- If someone cancels less than 2-weeks before the start of class, or simply doesn't show up => charged the full amount

**Teaching Methodology:**

Similar to the way Joe taught nine classes in the Graduate Training Program of The Trane Company, students will learn a concept and then immediately apply this new knowledge with an application problem. Quiz/testing will also be used to measure the overall effectiveness of the teaching. In this way, the program receives continual improvement through direct feedback.

**About the Instructor:**

Joe Becker is a graduate of the University of Wisconsin-Madison with degrees in Naval Science and Industrial Engineering (1979). He is also a Graduate from the U.S. Naval Nuclear Power School at Mare Island, California (1975). Joe is a registered Professional Engineer.

After nine years in the Navy, Joe resigned his Commission in the Civil Engineer Corps. Since graduating from GTP's class of 83-II, he worked as a Systems Engineer in C.D.S., Marketing Engineer in the Variable Air Volume Product Group, Manager of Technical Training in GTP, Sales Engineer, Sales Manager in Rochester/Syracuse & ISL for NE Territory. Joe currently works part-time for Trane's NE Territory and provides technical training through Becker Learning.

April 19, 2012 1:00 PM-4:00 PM EDT

# Dedicated Outdoor Air Systems: *A Path to Balancing Energy and IEQ*

Hear leading experts discuss the role of Dedicated Outdoor Air Systems in the overall HVAC system and describe various DOAS equipment configurations, characteristics, and applications. This webcast will identify common design and operational pitfalls, and cover challenges unique to DOAS.



## Presenters



Ron Jarnagin, 2011-12  
ASHRAE President  
Staff Scientist | Pacific North-  
west National Laboratory |  
Richland, WA



Tim McGinn, PE., LEED AP  
Principal | DIALOG | Calgary, AB,  
Canada



Stan Mumma, Ph.D., PE.  
Professor Emeritus | Pennsylvania  
State University | University Park, PA



John Murphy, LEED AP  
Applications Engineer | Trane |  
La Crosse, WI

### How to Participate

- You may register to view the Webcast on your PC
- You may host a webcast viewing site for your colleagues
- View the webcast at a site

### PDH Credits

Three (3) Professional Development Hours (PDHs) or three (3) AIA Learning Units may be awarded to viewers who complete the "Participant Reaction Form" by May 3, 2012.

### Sponsored by:



Brought to you by the ASHRAE Chapter Technology Transfer Committee

For more information about the program, presenters, continuing education credits, sponsorships, and DOAS resources please visit us at [www.ashrae.org/doaswebcast](http://www.ashrae.org/doaswebcast)



# ASHRAE Learning Institute 2012 Spring Online Course Series

## 2 WAYS TO REGISTER

Internet: [www.ashrae.org/onlinecourses](http://www.ashrae.org/onlinecourses)

Phone: Call toll-free at 1-800-527-4723 (US and Canada) or 404-636-8400 (worldwide)

Note: You may register up to 24 hours prior to an online course. Courses are in US Eastern Standard Time.



**District Cooling & Heating Systems**  
Mon, March 19, 2012 – 1:00 pm to 4:00 pm ET

**Basics of Combined Heat & Power**  
Wed, March 21, 2012 – 1:00 pm to 4:00 pm ET

**Evaluating the Performance of LEED®-Certified Buildings**  
Wed, March 28, 2012 – 1:00 pm to 4:00 pm ET

**Commissioning Process & Guideline 0**  
Wed, April 4, 2012 – 1:00 pm to 4:00 pm ET

\* **Complying with Standard 90.1-2010: HVAC/Mechanical**  
Mon, April 9, 2012 – 1:00 pm to 4:00 pm ET

\* **Complying with Standard 90.1-2010: Envelope/Lighting**  
Wed, April 11, 2012 – 1:00 pm to 4:00 pm ET

\* Take both Standard 90.1 courses and save 20% on the price of these courses



**The following courses are comprised of two parts. Registrants must attend both parts in order to receive CEU/PDH credits. Archiving is available.**

**Humidity Control: Principles and Applications – Part 1**  
Mon, March 26, 2012 – 1:00 pm to 4:00 pm ET

**Humidity Control: Principles and Applications – Part 2**  
Mon, April 2, 2012 – 1:00 pm to 4:00 pm ET

**Implementing ASHRAE Standard 189.1-2009 – Part 1**  
Mon, April 16, 2012 – 1:00 pm to 4:00 pm ET

**Implementing ASHRAE Standard 189.1-2009 – Part 2**  
Thurs, April 19, 2012 – 1:00 pm to 4:00 pm ET

**Integrated Building Design – Part 1**  
Mon, April 23, 2012 – 1:00 pm to 4:00 pm ET

**Integrated Building Design – Part 2**  
Wed, April 25, 2012 – 1:00 pm to 4:00 pm ET

## ASHRAE HVAC Design Workshops

2 Workshops, 5 Days of Intense Instruction

May 21-25, 2012 • ASHRAE Foundation Learning Center • Atlanta, GA

### HVAC Design: Level I – Essentials

May 21-23, 2012

ASHRAE's HVAC Design: Level I - Essentials workshop provides intensive, practical education for designers and others involved in delivery of HVAC services. Developed by industry-leading professionals, the workshop provides participants with training design to accelerate their evolution into effective member on a design, construction or facilities maintenance team. Gain the fundamentals and technical aspects to design, install and maintain HVAC systems.

### HVAC Design: Level II – Applications

May 24-25, 2012

ASHRAE's HVAC Design: Level II - Applications workshop provides advanced instruction on HVAC system designs for experienced HVAC designers or those who completed the HVAC Design: Level I Essentials workshop. Gain an understanding of system design incorporating the application of Standards 55, 62.1, 90.1 and 189.1.

### Creating Effective, Highly Skilled Engineering Team Members

- Gain knowledge to make immediate contributions to design projects
- Participate in in-depth, practice-focused training
- Learn from industry leaders selected by ASHRAE
- Receive free bonus resources valued at over \$200

Attendees of the HVAC Design Workshops can earn continuing education credits. Contact the relevant governing body for more information.



Visit [www.ashrae.org/hvacdesign](http://www.ashrae.org/hvacdesign) to register

## ASHRAE Certification Programs

- Building Energy Assessment Professional (BEAP)
- Building Energy Modeling Professional (BEMP)
- Commissioning Process Management Professional (CPMP)
- Healthcare Facility Design Professional (HFDP)
- High-Performance Building Design Professional (HBDP)
- Operations & Performance Management Professional (OPMP)

For more info, visit  
[www.ashrae.org/certification](http://www.ashrae.org/certification)



# ASHRAE Student Membership Application

## What You'll Get With Your ASHRAE Student Membership!

### What's "Cool" In ASHRAE

- ASHRAE promotes energy efficiency, savings and recovery
- ASHRAE reports on building controls, automation and integration
- ASHRAE focuses on green building issues and green technology
- ASHRAE maintains standards for indoor air quality
- ASHRAE promotes solar and other alternative energy sources
- ASHRAE offers certification programs, online learning opportunities and courses and seminars at ASHRAE Conferences

### How Can ASHRAE Help You?

- Provide access to new technology
- Offer professional development opportunities
- Create opportunities for networking
- Offer online continuing education programs and eLearning programs

### Student Member Benefits

- Access to members-only web pages
- Discounts on ASHRAE Handbooks
- Monthly ASHRAE Journal - print and digital
- HVAC&R Industry and Society Connections eNewsletters
- Complimentary ASHRAE Annual and Winter Conference registration (AHR Expo, Student Program, Technical Sessions)
- Virtual online HVAC&R resume posting, job and internship searching program

### ASHRAE Student Member Opportunities

- Society and chapter-level scholarships for both undergraduate and graduate engineering students
- Discounts for student members on select publications, go to [www.ashrae.org/bookstore](http://www.ashrae.org/bookstore) for more information
- Student Design Competition
- Networking with local ASHRAE Chapters
- Senior Undergraduate Project Grant Program
- At the student branch level, you'll enjoy meeting other students with similar interests - if your school hasn't yet started a student branch, take charge and contact a faculty member and ask for help on getting started!

You can continue your student membership after college with the ASHRAE SmartStart Program. After you graduate, you pay \$20 for the first year, \$50 for the second and the third years before advancing to regular member dues!

**Join ASHRAE students on Facebook  
Visit [www.ashrae.org/students](http://www.ashrae.org/students) to join!**





# ASHRAE

STUDENT MEMBERSHIP APPLICATION

AMERICAN SOCIETY OF HEATING, REFRIGERATING AND AIR-CONDITIONING ENGINEERS, INC.  
ASHRAE • 1791 TULLIE CIRCLE NE • ATLANTA, GA 30329-2305 • FAX: 678-539-2212

FIRST NAME:

LAST NAME:

DATE OF BIRTH (mm/dd/yyyy)

**Current Mailing Address: (this will be where all correspondence will be sent unless otherwise specified)**

Street Address: \_\_\_\_\_ Apt. # \_\_\_\_\_ City: \_\_\_\_\_

State/Province: \_\_\_\_\_ Postal Code: \_\_\_\_\_ Country: \_\_\_\_\_

Email: \_\_\_\_\_ Alternate email: \_\_\_\_\_ Phone: \_\_\_\_\_

**Permanent Mailing Address: (during the Summer Months and after graduation)**

Check if Current Address is the same as Permanent Address

Street Address: \_\_\_\_\_ Apt. # \_\_\_\_\_ City: \_\_\_\_\_

State/Province: \_\_\_\_\_ Postal Code: \_\_\_\_\_ Country: \_\_\_\_\_

Email: \_\_\_\_\_ Alternate email: \_\_\_\_\_ Phone: \_\_\_\_\_

ASHRAE protects contact information provided by its members and customers. To view ASHRAE's privacy policy visit [www.ashrae.org/privacy-policy](http://www.ashrae.org/privacy-policy).

**All student applicants must have the name and member number of an ASHRAE member serving as their student sponsor. If your Student Branch Advisor is an active Associate or Full member, he/she can serve as your sponsor. If you need assistance locating a sponsor, please email [students@ashrae.org](mailto:students@ashrae.org) or call 678-539-1212. Also, you must list the name, phone and email address of your faculty advisor or course instructor.**

Sponsor Name: \_\_\_\_\_ ASHRAE Member #: \_\_\_\_\_

Advisor/Instructor: \_\_\_\_\_ Phone: \_\_\_\_\_

Email: \_\_\_\_\_

To receive your subscription to the ASHRAE Journal, please answer the following questions by entering the appropriate codes in the spaces provided.

Which best describes your firm? \_\_\_\_\_

- 11. Consulting Engineering
- 12. Architect/Architectural & Eng Services
- 15. Design/Build
- 21. Contractor
- 26. Property Mgmt & Dev
- 31. Industrial Facility
- 41. Commercial Facility
- 42. Government, Healthcare, Education
- 43. Utility
- 51. Manufacturer/HVAC&R Equipment
- 61. Manufacturer's Representative
- 62. Sales Engineering
- 71. Wholesaler or Distributor
- 83. Library
- 84. Technical, Professional or Trade Association
- 86. Student \*\*\*
- 91. Other (Please Specify) \_\_\_\_\_

Which best describes your title? \_\_\_\_\_

- B. President
- C. Partner
- D. Associate
- E. Owner
- F. Vice President
- G. Vice President Eng, Chief Engineer
- K. Design Engineer
- L. Project/Application Engineer
- O. Facility Engineer/Manager
- P. Research/Development Engineer
- R. Sales Engineer, Sales
- S. Purchasing Agent
- T. Draftsperson
- U. Estimator
- W. Technician
- X. Instructor, Professor
- Y. Student \*\*\*
- Z. Librarian
- ZZ. Other (Please Specify)

ASHRAE Society Dues include \$6.00 for ASHRAE Journal. This amount is not deductible from Membership dues.

I would like to participate in the activities of the \_\_\_\_\_ ASHRAE Chapter.

School Name: \_\_\_\_\_

Street Address: \_\_\_\_\_ City \_\_\_\_\_ State: \_\_\_\_\_

Country: \_\_\_\_\_ Postal Code \_\_\_\_\_

Expected Graduation Date: \_\_\_\_\_

Full time:  Part time:  Degree: \_\_\_\_\_

\*Classification: Freshman  Sophomore  Junior  Senior  Masters/PhD.

**ASHRAE Student Membership** \$20.00 USD

**ASHRAE Handbook - Fundamentals**  IP  SI

(you will receive the most current edition of Fundamentals)

More than 900 pages of HVAC&R technical information and it includes the CD! (List Price \$195)

Student Member Price: \$49.00 USD \$ \_\_\_\_\_ USD

Total \$ \_\_\_\_\_ USD

\*Additional books are available at [ashrae.org/studentbookstore](http://ashrae.org/studentbookstore)

\*Please allow up to 30 days to receive new member packets. For U.S. book orders, allow 3-5 business days from processing. For international locations and Canada, allow 7-10 business days from processing.

**\*\*Please complete the ENTIRE application to ensure accuracy. Incomplete applications will NOT be processed.\*\***

Method of payment:  VISA / Master Card  American Express  Diner's Club  Check or money order enclosed\*

Card Number: \_\_\_\_\_ Expiration Date \_\_\_\_\_ CW No. \_\_\_\_\_ Amount: \_\_\_\_\_

Signature: \_\_\_\_\_ Date: \_\_\_\_\_

Print Name (as it appears on card): \_\_\_\_\_

**\*Checks will be accepted in U.S and Canadian funds. Credit Card payments will be accepted in U.S. funds only.**



## ROCHESTER CHAPTER COMMITTEE REPORT 2012 January 20

### MISSION STATEMENT

The primary objective for the YEA Committee is to enhance our member benefits for young professional ASHRAE members by identifying activities and services focused on their needs.

- *National YEA Committee*

### NEW BUSINESS

#### ASHRAE Group Learning Texts Program:

The Fundamentals of Water System Design

Starting Monday March 5<sup>th</sup> from 6pm-8pm (location at RIT)

For more information, please contact Chris Lukaszewicz ([clukasiewicz@turnerengineering.com](mailto:clukasiewicz@turnerengineering.com))

or Jaimee Reynolds ([jreynolds@pathfinder-ea.com](mailto:jreynolds@pathfinder-ea.com)).

Next YEA Social Hour: to be determined

### OLD BUSINESS AND IN PROGRESS

Plan technical programs:

ASHRAE Group Learning Texts Program

Review benefits of ASHRAE membership

Fundamental Sessions

ASHRAE standards

System design

EIT/PE Exam study groups

Plan technical tours

Seneca Park Zoo

RIT Ice Rink with ice skating

Blue Cross Arena with Amerks hockey game

YEA Leadership Weekend: Spring 2012

Several members interested in attending

Student Outreach:

Contact Monroe Community College

Plan "career night" to help students with resumes and discuss careers in HVAC





## 55th Annual Dinner Dance

February 10<sup>TH</sup>, 2012



ACCA, Rochester

Air Systems Balancing & Testing Service, Inc.

ABR Wholesalers, Inc.

American Metal Products

Cogenic Mechanical

Crosby-Brownlie, Inc.

Day Automation Systems, Inc.

Gray Metal Products, Inc.

Guckian Energy Systems, LLC

Isaac Heating & Air Conditioning, Inc.

J.W. Swanson & Associates, LLC

LaBella Associates P.C.

Mech Tech HVAC, Inc.

Monroe Piping and Sheet Metal

Northern Air Systems

PASCO Building Automation

Postler & Jaeckle Corporation

R.F. Peck, Inc.

R.L. Kistler, Inc.

R.P. Fedder Corporation

Sheet Metal Workers Local #46

Siemens Control

T.H. Herman

Trane

Upstate Systems, Inc.

V.J. Stanley, Inc.

V.P. Supply Corp





# 2012 ASHRAE PICNIC SPONSORSHIP FORM

Tuesday, May 15, 2012

 <p><b>RAVENWOOD</b> GOLF CLUB</p>		
<p>Ravenwood Golf Course 929 Lynaugh Road Victor, NY 14564</p> <p>11:00 AM – 4:30 PM - Golf</p>	<p><b>Picnic: 4:30 PM-8:00 PM</b> 4:30 PM - 6:00 PM Cocktails and Hors d'oeuvres 6:00 PM - 8:00 PM Dinner Catered By: Dinosaur Barbeque at Ravenwood Golf Club</p> 	<p>Thank you in advanced for supporting this long standing Rochester ASHRAE Chapter tradition.</p>

*Please include check (on notes put what sponsorship you made) and make payable to:*  
**ASHRAE Rochester Chapter**  
and mail to:  
Attention: Edward J. Burns  
Mech Tech HVAC, Inc.  
1805 Tebor Road Suite 8  
Webster, NY 14580  
*Any questions, call Ed at (585) 872-6681  
Email: [ejb@mechtechvac.com](mailto:ejb@mechtechvac.com)*

Please fill out so we can correctly recognize you or your company:

Company Name: \_\_\_\_\_

OR

Individual Name: \_\_\_\_\_

Address: \_\_\_\_\_

City: \_\_\_\_\_ State: \_\_\_\_\_ Zip: \_\_\_\_\_

Phone: (Work) \_\_\_\_\_ (Home) \_\_\_\_\_

<b>Sponsorship Form</b>		
<i>Sponsorship Name</i>	<i>X here for Sponsorship</i>	<i>Sponsorship Amt.</i>
Major Door Prize Sponsor – Gift/Item or Cash Donation- \$200 or more.		
Gold - \$250.00 - Hole Sponsorship and Recognition at Picnic		\$250.00
Silver - \$150.00 - Hole Sponsorship		\$150.00
Bronze - \$100.00 - Recognition at Picnic		\$100.00
Prize Sponsor - \$175.00 - Longest Drive		\$175.00
Prize Sponsor - \$175.00 - Closest to Pin		\$175.00
<b>Total Check Amount:</b>		



**TUESDAY, MAY 15, 2012**  
**ASHRAE Picnic / Golf Tournament**  
**To be held at**  
**Ravenwood Golf Course**

Reservation Deadline is... **May 8th, 2012**  
 (There is a limited amount of tickets this year on a first come basis)

<p>Ravenwood Golf Course 929 Lynaugh Road Victor, NY 14564 Golf Registration 9:30 – 10:45 Juice, Scones and Coffee Served 11:00 am - Shotgun Start</p>	<p><b>Picnic: 4:30 PM-8:00 PM</b>          4:30 PM - 6:00 PM          Cocktails and Hors d'oeuvres          6:00 PM - 8:00 PM          Dinner Catered By:  <b>Dinosaur Barbeque</b>          at Ravenwood Golf Club</p>	<p><b>Four Man Scramble and Optional Skins Game.</b></p> <p><u>Golf includes:</u></p> <ul style="list-style-type: none"> <li>➤ Golf</li> <li>➤ Cart</li> <li>➤ Driving Range</li> <li>➤ Prizes</li> <li>➤ On course beverages and food at the turn</li> </ul>

**NO TICKETS WILL BE SOLD OR DISTRIBUTED AT THE DOOR! RES HAS THE TICKETS THIS YEAR.  
 TICKETS WILL BE MAILED TO YOU OR CAN BE PICKED UP AT THE  
 ROCHESTER ENGINEERING SOCIETY.**

**Please include check and make payable to:  
 "ASHRAE – Rochester Chapter"**

Return this form....  
 Mail prior to **May 8th, 2012** to:  
 Attention: Reservation Clerk  
 Rochester Engineering Society  
 150 State Street  
 Rochester, New York 14614  
 Any questions, call (585) 254-2350  
 Email: [res@frontiernet.net](mailto:res@frontiernet.net)

Address where you would like your picnic tickets sent to:

Company: \_\_\_\_\_

Contact Name: \_\_\_\_\_

Address: \_\_\_\_\_

City: \_\_\_\_\_ State: \_\_\_\_\_ Zip: \_\_\_\_\_

Phone: (Work) \_\_\_\_\_ (Home) \_\_\_\_\_

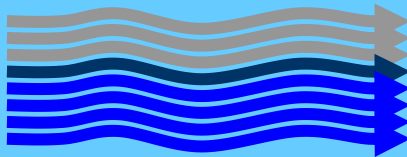
<b>Entry Form</b>			
<b>Ticket Request Form</b>			
<b>Event</b>	<b>Fee Amount</b>	<b>No. Attending</b>	<b>Total</b>
Golf	\$90.00		\$
Picnic	\$50.00		\$
<b>OR:</b>			
Golf and Picnic <b>(SAVE \$10.00)</b>	\$130.00		\$



This section of the newsletter is reserved for those firms wishing to advertise their desires to hire from the Chapters Membership.

If you are interested in utilizing this FREE service provided by the Rochester Chapter, please contact our Chapter President, Jeff Ellis (585.232.3440) or by email [ellis@airsystemsbalancing.com](mailto:ellis@airsystemsbalancing.com)

This service is available to ASHRAE members for any local firm in our industry looking for knowledgeable persons in the HVAC&R industry.



## R.F. PECK CO., INC

889 ATLANTIC AVE  
ROCHESTER, NEW YORK 14629  
Phone: (585) 697-0836 Fax: (585) 697-0839

### Engineered Products Salesman

The R.F.Peck Company is a commercial HVAC manufacturer's representative firm serving Upstate New York, Vermont and Western Massachusetts for over fifty years. We are looking for an energetic, self-starting, Engineered Products Salesman for the Greater Syracuse Area. A mechanical engineering degree is preferred but not required.

Email resume to [jbrowe@rfpeck.com](mailto:jbrowe@rfpeck.com).



*A talent for design—A sense for people*

### Senior Mechanical Engineer (HVAC)/ Department Manager

Turner Engineering is a multi-disciplined consulting engineering company based in East Rochester, NY. We provide HVAC, plumbing, fire protection, electrical, and communications engineering services for the construction industry. [www.TurnerEngineering.com](http://www.TurnerEngineering.com). We design the systems that make health care, institutional, commercial, educational, municipal, and mission-critical facilities efficient, comfortable, and safe.

We are a growing firm and require a Senior Mechanical HVAC Engineer with 8+ years of related experience to lead and manage the mechanical HVAC department. Ideal candidates are energetic, driven, efficient and looking to grow with the organization. Candidates must also be willing to perform the responsibilities associated with a senior engineer. Responsibilities include, but are not limited to: design, calculations, and coordination of HVAC systems for new construction, renovations, and energy upgrades. Responsibilities also include managing, leading and training junior staff. We offer competitive compensation packages and benefits. A detailed job description can also be viewed at [www.turnerengineering.com/careers/open-positions](http://www.turnerengineering.com/careers/open-positions)

Email resumes to [bpitts@turnerengineering.com](mailto:bpitts@turnerengineering.com)





**AMERICAN SOCIETY OF HEATING, REFRIGERATING  
AND AIR CONDITIONING ENGINEERS**

**ROCHESTER, NEW YORK CHAPTER**

February 13, 2012

LOCATION: Mario's Monroe Ave. Rochester, NY

President	Jeffrey Ellis	X
President Elect/Program	Michelle Sommerman	
Vice President/Tech Session	Robert Wind	X
Secretary Picnic/Golf	Ed Burns	X
Treasurer	Christina Walter	X
Immediate Past President/CRC	Jim Browe	
Awards/Student Activities	Al Rodgers	
Buyers Guide	Chuck White	
Hiistorian	Lee Loomis	X
Board of Gov. (1) Membership	Bill Clark	
Board of Gov. (1)	Beth Smith	
Board of Gov. (1) Newsletter	Jaimee Reynolds	X
Board of Gov. (2)	Eric Smith	X
Board of Gov. (2) Research	Jeff Close	
Board of Gov. (3)	William Murray	
Board of Gov. (3) Attendance	Tim Duprey	X
Website	Kevin Wind	
Refrigeration	Michael Nohle	
Nominating	Jeff Davis	
Valentine's Dance	Jody M. McGarry	
Publicity	Mark Kukla	
YEA	Chris Lukasiewicz	X

# Meeting Minutes

**Roll Call:** The above noted individuals were present.

**Call to Order:** 10:00 am by Jeff Ellis

**Minutes:**

**Previous Meeting Minutes** - Motion made move to receive. Previous meeting minutes approved.

**Treasurer Reviewed Budget** - Report submitted by Chris Walter.

**Program Tech Sessions** - Calendar distributed with reaming year program schedule.

**Membership** – Current 244 members \* 6 New Members this month\*  
12 members currently delinquent with dues.

**Attendance** – Tim submitted report. 78 attendees at the January meeting. 11 walk ins. Pay Pal is working really well.

**Student Activities** – 2 students attended ASHRAE in Chicago. Chapter reimbursed expenses for both. Jaimee Reynolds has written base line guide on student selection. Guide to be reviewed and written into MOPS at future date.

**YEA** –Leadership weekend 3/30 – 4/1 San Diego, CA - Derrick Day is attending. Chapter to reimburse registration and travel costs. Group learning all set and scheduled for 3/5/2012. “Fundamentals of Water System Design” cost \$60.00 6 sessions. Instructors Andy Butler, Al Rodgers, Bill Murray & Pat Whalen. Look like approx. (22) attendees registered for sessions. Flyers are being produced noting >What is ASHRAE? and What is YEA?

**Research** –Thermometer \$ updated to 5K toward 18 K goal.

**Refrigeration** – Mike Nohle good with April Wegmans tour.

**News Letter** – 2/24 submission deadline. Golf Picnic Flyers to be included in March and April.

**Buyers Guide** –Guide is up and online. Currently (5) companies are advertising. Buyers Guide advertisement is open to all there will not be a deadline for advertising. Any companies wishing to join have a prorated cost for the year. Advertisement renewal date will be set by Jim Browe and Chuck White. Everything looks good.

**Website** – New ASHRAE Logo and tag line to be updated by Kevin.

# Meeting Minutes (continued)

**Historian** –Lee is amassing history material and sorting thru it. Rudy from Chapter 1 has asked Lee to write a Rochester chapter history.

**Publicity** – Mark Kukla to announce names today for 2012/2013 officer nomination.

**Valentines Dance** – 85 attendees and many sponsors. Great job Jody! WOW 55 years running so far! Very Cool.

**Picnic** - All set for May 15<sup>th</sup>. Current committee consists of Jeff Close, Jim Browe & Ed Burns. First meeting to take place in March. Ticket and event sponsor flyer form to be submitted to Jaimee for newsletter and mailings. 3/10/12 and 4/10/12

**Old Business** – Students attended winter meeting in Chicago. Jaimee working on guide for MOPS. Buyers guide> let's promote it there is a source for revenue stream with advertisers.

**New Business** – ASHRAE – Rebranding. All correspondence should now be utilizing the new ASHRAE logo. ASHRAE webcast 4/19 decision made not to meet at a central location for the webcast as most will now just view it in office with desktop. Webcast notification flyers are to be distributed today at the meeting. Joint meeting or seminar with SMANACA is in planning. Possibly ½ day of seminar and ½ day of a fun event. Possibly at the New York Wine & Culinary Center? YEA is promoting a happy hour type event for the March of Dimes at Fat Tuesdays.

**Next Meeting** - March 9<sup>th</sup> at 12:00 pm Location: Trane

The meeting was adjourned



## WELCOME TO OUR NEW MEMBERS

Mr Aaron Cook  
Ms. Elizabeth Day  
Mr. Patrick James Ford  
Mr. Shane Douglas Hirt  
Mr. Paul P. Kenna

Erdman Anthony  
LaBella Associates, P.C.  
HVAC Green Energy  
Crosby Brownlie  
Carrier

### 2011-2012

Chapter #	Chapter Name	Chapter Members	Member Promotion	Student Activities	Research Promotion	Chapter Technology Transfer	History	Chapter Operations	Chapter PAOE Totals
11	Rochester	243	210	175	705	50	110	50	1300

# Society News—ASHRAE Re-Branding



Shaping Tomorrow's  
Built Environment Today

## **Return to Chicago Sees High Attendance, Rebranding for ASHRAE**

ATLANTA –Chicago once again proved to be a popular destination for the 2012 ASHRAE Winter Conference, with high attendance numbers, as well as an exciting announcement about the future of the Society.

Some 2,800 people attended the Conference, held Jan. 21-Jan. 25, in Chicago, Ill. Attendance this year was higher than the past four Winter Conferences, except Las Vegas 2011.

Also taking place in conjunction with the Conference was the Air-Conditioning, Heating, Refrigerating Exposition, which attracted nearly 58,000 registered attendees, including a record 39,000 plus visitors. It was also the largest AHR Expo in the Show's 82-year history, at nearly 430,000 square feet, making it 5 percent bigger than the Show held in Chicago in 2006.

The biggest buzz at the ASHRAE Winter Conference was the announcement of ASHRAE's rebranding, which includes a new logo and tagline, as well as a move to refer to the Society as simply "ASHRAE," as opposed to its full name.

"The evolved ASHRAE brand supports our focus on improving engineering standards and our market position as a community of engineers and related professionals united by knowledge, mission and a code of ethics to design, construct and operate better places for people to live, work and play," ASHRAE President Ron Jarnagin, said.

A redesigned ASHRAE.org was also announced along with the rebranding during the Conference. The updated website provides better navigation, a better search engine and better tracking, all of which helps visitors find the information they need to support their efforts in the industry and the Society.

The Winter Conference technical program featured nearly 300 presentations, with the top attended session in the systems and equipment, O&M and high performance buildings tracks. The top-attended sessions were Selection of Proper Chiller Technology; Thermal Displacement Ventilation Applications; Heat Pump Optimization; Air Source vs. Ground Source Heat Pump Systems; Integrated Design Energy Retrofits; and Water-Cooled VRF Systems.

Other Conference highlights included the Technical Plenary, which drew 600 attendees, with its focus on Chicago's Energy-Efficient, Economic Model for Sustainability.

These, and additional sessions, from the Technical Program are part of ASHRAE's Virtual Conference, which provides access to more than 250 presentations and PDFs of posters. Register or access presentations at [www.ashrae.org/chicagovirtual](http://www.ashrae.org/chicagovirtual).

Also offered were six Professional Development Seminars and 14 short courses from the ASHRAE Learning Institute. The most popular courses were Complying with Standard 90.1-2010: HVAC/Mechanical; Energy Management in New & Existing Buildings; Understanding Air-to-Air Energy Recovery Technologies and Applications; and Designing Towards Net Zero Energy Commercial Buildings. Additionally, two new courses were offered: Basics of Combined Heat and Power, which was very well attended, and Evaluating the Performance of LEED®-Certified Buildings.

Pencil and paper exams for all six ASHRAE certifications were also offered at the Conference; 27 people sat for the exams. Those who pass the exam will join the 1,100 others who have already obtained ASHRAE certifications. ASHRAE certifications include Building Energy Assessment Professional; Building Energy Modeling Professional; Commissioning Process Management Professional; Healthcare Facility Design Professional; High-Performance Building Design Professional; and Operations and Performance Management Professional.

Top selling publications included "Procedures for Commercial Building Energy Audits, second edition;" ASHRAE Pocket Guide; 2012 Winter Conference CD; Standard 90.1-2010 Energy Standard for Buildings Except Low-Rise Residential Buildings; Standard 62.1-2010, Ventilation for Acceptable Indoor Air Quality; "A Practical Guide to Seismic Restraint, second edition;" "Energy Efficiency for Existing Commercial Buildings: Technical Implementation;" and Standard 90.1-2010 User's Manual.

ASHRAE, founded in 1894, is a building technology society with more than 50,000 members worldwide. The Society and its members focus on building systems, energy efficiency, indoor air quality and sustainability within the industry. Through research, standards writing, publishing and continuing education, ASHRAE shapes tomorrow's built environment today.

Editors Note: Photos from the meeting can be obtained by contacting Jodi Scott at [jscott@ashrae.org](mailto:jscott@ashrae.org) or Amanda Dean at [adean@ashrae.org](mailto:adean@ashrae.org).



# Society News—AEDG—Retail Stores

## 50 Percent Energy Savings for Retail Stores Now Available, No Coupon Required

ATLANTA – Energy costs are typically the second highest operating expense for a retailer, so use of the latest 50% Advanced Energy Design Guide can help in creating a cost-effective design for medium to big box retail stores and can have a direct and significant impact on profitability.

For a discount on energy efficiency, owners, engineers, designers, architects and others on the building team are encouraged to download Advanced Energy Design Guide for Medium to Big Box Retail Buildings: Achieving 50% Energy Savings Toward a Net-Zero-Energy Building. The Guide applies to medium to big box retail buildings with gross floor areas between 20,000 and 100,000 sq. ft.; however, many of the recommendations also can be applied to smaller or larger retail buildings.

It is the third book in a series of Advanced Energy Design Guide (AEDG) publications that provides recommendations to achieve 50% energy savings when compared with the minimum code requirements of ANSI/ASHRAE/IESNA Standard 90.1-2004, Energy Standard for Buildings Except Low-Rise Residential Buildings.

“When the comfort of a customer can impact a purchase in a shopping environment it’s important for retail stores to find a balance between energy efficient measures for the building and the convenience for their customers,” Shanti Pless, chair of the AEDG project committee, said. “This guide offers guidance and tips for implementing successful energy savings strategies while enhancing the shopping experience.”



The new guide features easy-to-follow recommendations for each of the US climate zones and tips on how to implement those recommendations. Case studies and technology examples provide real-life examples of how retailers have achieved significant energy savings.

Also included is information on integrated design, including best practices as a necessary component in achieving 50% energy and the inclusion of a performance path—specifically, offering annual energy use targets to help with goal setting.

Additional design tips include:

- Information on integrating absolute energy use targets into the design process.
- Retail-specific whole building and technology case studies.
- Different vestibule configurations to reduce outdoor air infiltration.
- Different ways to daylight sales floors, storage areas, offices and conference/break rooms.
- Methods to achieve space-by-space interior lighting power densities that are, on average, 45% better than Standard 90.1-2004.
- Sample design layouts and recommendations for ambient lighting, perimeter lighting, and accent lighting; including LED display lighting.
- Ways to reduced exterior (façade, walkway, parking lot and drive) lighting energy consumption.
- Recommendations for reduction and control of sales floor plug loads, office equipment, security system plug loads, vending machines, illuminated signs, and service water heating.
- HVAC roof-top unit configuration and zoning strategies.
- HVAC ventilation air control strategies.
- Recommendations for commissioning and measurement and verification to ensure that energy savings potentials are realized.

The book was developed by a committee representing a diverse group of energy professionals drawn from ASHRAE, the American Institute of Architects (AIA), the Illuminating Engineering Society of North America (IES), the Department of Energy (DOE) and the United States Green Building Council (USGBC).

ASHRAE, AIA, IES, DOE and USGBC are currently developing the fourth and final guide in the 50% series, which will focus on large hospitals and be available in the spring of 2012.

The guide follows the earlier six-book series that provided guidance to achieve 30% savings. The ultimate goal is to provide guidance to achieve net-zero-energy buildings, that is buildings that produce more energy than they consume.

Advanced Energy Design Guide for Medium to Big Box Retail Buildings: Achieving 50% Energy Savings Toward a Net-Zero-Energy Building is available as a free download at [www.ashrae.org/freeaedg](http://www.ashrae.org/freeaedg). A print version is available for \$82 (\$69, ASHRAE members). To order, contact ASHRAE Customer Service at 1-800-527-4723 (United States and Canada) or 404-636-8400 (worldwide), fax 404-321-5478. Bulk discounts are available to individuals, companies and organizations who are interested in purchasing multiple copies.

ASHRAE, founded in 1894, is a building technology society with more than 50,000 members worldwide. The Society and its members focus on building systems, energy efficiency, indoor air quality and sustainability within the industry. Through research, standards writing, publishing and continuing education, ASHRAE shapes tomorrow’s built environment today.

*Welcome to ASHRAE's Government Affairs Update. Along with the Government Affairs webpage, these periodic e-mail updates feature information on government affairs related activities of interest to ASHRAE members and others interested in the built environment. Archives of previous updates are available from the government affairs webpage (<http://www.ashrae.org/advocacy>).*

*Please pass this information on to interested colleagues who also may subscribe from the ASHRAE Government Affairs webpage.*

*If you have any recommendations regarding content, or have questions about or would like to participate in Washington Office activities, please contact ASHRAE Government Affairs staff at (202) 833-1830 or [washdc@ashrae.org](mailto:washdc@ashrae.org).*

## ASHRAE Government Affairs Update, 2-24-2012

[Members of EU Parliament Call for Binding Energy Targets](#)

[U.S. Sec. of State Clinton Announces Climate & Clean Air Initiative to Reduce Short-Lived Climate Pollutants](#)

[\\$98 Million for Building Energy Codes & Standards Could be Coming to DOE](#)

[President Obama Budget Proposes \\$3 Billion for STEM Education Programs](#)

[U.S. Celebrates National Engineers Week](#)

[Consumer Interest in Renewable & Cleaner Energy Dips, Report Finds](#)

[At the Chapter Level, You Can Take Action on Public Policy](#)



### Members of EU Parliament Call for Binding Energy Targets

Members of the European Parliament (MEPs) have called for binding targets to increase energy efficiency by 20 percent by 2020, in exchange for greater flexibility in meeting this overall goal. For more information, visit (PDF) <http://ow.ly/9h5Xr>.

### U.S. Sec. of State Clinton Announces Climate & Clean Air Initiative to Reduce Short-Lived Climate Pollutants

HFCs, black carbon, and methane are all on the list of short-lived climate pollutants to be addressed by a new partnership coalition between the U.S., Bangladesh, Canada, Ghana, Mexico, Sweden, and the U.N. Environment Programme. The creation of the new Climate and Clean Air Coalition to Reduce Short-Lived Climate Pollutants was announced by U.S. Secretary of State Hillary Rodham Clinton. Additional information on this announcement and the Coalition is available at <http://ow.ly/9gzzyr>.

## **\$98 Million for Building Energy Codes & Standards Could be Coming to DOE**

Under the President's budget request to Congress for fiscal year 2013, the U.S. Department of Energy's (DOE) Building Energy Codes and Standards Program would receive \$98 million, and the Building Technologies Program (under which the Codes and Standards Program falls) would receive \$310 million – an increase of 41 percent over what the Building Technologies Program received in FY 2012.

What this all means is that building energy codes and standards are inching – and some may say leaping – their way into prominence. While the President's budget might not be fully enacted by Congress, his message does have an impact on policymaking, and his message is that building energy codes and standards are critically important, and the federal government has an interest in increasing its involvement.

For additional information on the President's FY 2013 budget request, visit <http://www.whitehouse.gov/omb>.

## **President Obama Budget Proposes \$3 Billion for STEM Education Programs**

In his FY 2013 budget request to Congress, President Barack Obama is calling for a \$3 billion investment in science, technology, engineering, and mathematics (STEM) education for programs across the federal government, including the U.S. Department of Education, and the National Science Foundation.

Details of the President's STEM education proposal are available at (PDF) <http://ow.ly/9gPtU>.

## **U.S. Celebrates National Engineers Week**

National Engineers Week (EWeek) is being celebrated this week (February 19 to 25). EWeek celebrates the contributions that engineers make to our society and encourages engineering as a career path among young students by promoting pre-college literacy in math and science. ASHRAE is a partner in the EWeek program.

Recognizing the importance of the Week, U.S. Representatives Daniel Lipinski (D-IL) and Donald Manzullo (R-IL) and 23 bipartisan cosponsors introduced a resolution supporting the goals and ideals of National Engineers Week. Additionally, with the encouragement of ASHRAE, the governors of Arkansas, Florida, Hawaii and Kansas, as well as the mayor of New York City, were among those that issued proclamations in support of EWeek.

To view ASHRAE's press release on the Week, visit <http://ow.ly/9gQtg>. To view additional information on EWeek, visit <http://www.eweek.org>.

## **Consumer Interest in Renewable & Cleaner Energy Dips – Many Still Support, Report Finds**

A nationally representative survey sample of 1,000 U.S. adults in the fourth quarter of 2011 found waning interest and increased negativity towards a broad array of renewable and cleaner energy options. Could this be an impact from the elections, or something more?

To view the report, visit <http://ow.ly/9gRU9>. You may need to complete the free registration prior to downloading and viewing the report.

## At the Chapter Level, You Can Take Action on Public Policy

### Consider these facts:

- ASHRAE's Government Affairs staff are tracking nearly 1,250 bills at the state level.
- Beyond the state level, there are close to 20,000 municipal governments – most of which have their own processes for enacting ordinances and adopting regulations.
- Similarly, there are 10 Canadian provinces and three territories – and their respective cities and towns.

Add this all up and you have a lot of ground to cover.

That said, you – as ASHRAE members, ASHRAE chapters, and as technical experts – can make an impact on what's going on in your communities policy-wise.

### What can you do as a chapter leader?

- Identify chapter members to lead grassroots coordination and organization efforts.
- Encourage chapter members to participate in ASHRAE Technical Committees, which is a great opportunity for development of potential public policy and to develop greater subject matter expertise.
- Ask ASHRAE's Government Affairs Office to provide you with state legislative tracking information relative to states in which your chapter is interested.
- Plan, set goals, track progress, talk with other chapters, and review plans on an annual basis; and, when all else fails.
- *Ask ASHRAE's Government Affairs Office staff for guidance, support, and ideas.*

### How is this possible and what are the guidelines for working at the grassroots level?

- Chapters, sections, and their members *may not* speak for ASHRAE Society without prior approval by ASHRAE's Advocacy Committee and except as permitted by the Rules of the Society Board of Directors, but may promote documents approved by the Board (e.g., standards, position statements, briefs).
- Members *may* speak for themselves on issues – in particular, relative to their professional credentials and technical expertise.
- Individuals *may* represent themselves as private citizens or as professionals with special knowledge.

SO

Be sure to clarify one's speaking role.



## Why should you get involved?

- You can become a part of something BIGGER in the ASHRAE family.
- You can establish relationships with key policymakers both within government ("advocacy") and key allies/allied organizations ("government affairs").
- You will benefit from personal and professional development and become of greater value to your employer and to your community.

## What issues should you be on the lookout for?

- Building energy codes
- Licensure (e.g., barriers to entry into the profession, continuing education requirements).
- Building energy disclosure
- STEM education initiatives
- Use of voluntary consensus standards – particularly, ASHRAE standards
- General sustainability measures related to built environment

If you want to take on this tough, but very rewarding task, there are many tools available for those ASHRAE members who wish to truly become engineer-advocates. Go to [www.ashrae.org/advocacy](http://www.ashrae.org/advocacy) to view just some of these resources – and contact ASHRAE's Government Affairs Staff via email to [washdc@ashrae.org](mailto:washdc@ashrae.org) or by phone at (202) 833-1830.



Shaping Tomorrow's  
Built Environment Today